

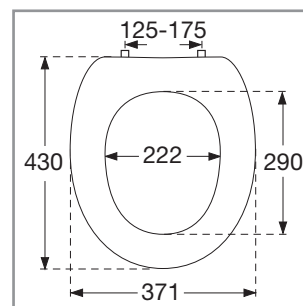
Toilet seat Omnia Vita

Model

8821 61 Omnia Vita toilet seat, incl. 8821 01 61 universal hinge

Product Description

Omnia Vita toilet seat in Sandwich design made of colour in-grained duroplast with hinge in stainless steel and plastic
 – incl. universal hinge in stainless steel
 – centre distance: 125-175 mm
 – load of ring seat: 240 kg
 – 10 year guarantee

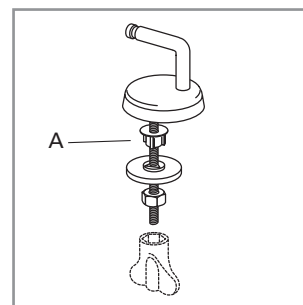


Colour Programme

1 White (Alpin)

Hinge Finish

61 Stainless steel

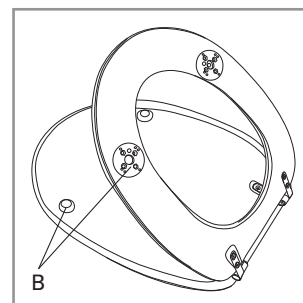


Spare Parts

A) 8821 01 61 Universal hinge
 B) 9220 98 00 Buffers for seat and cover

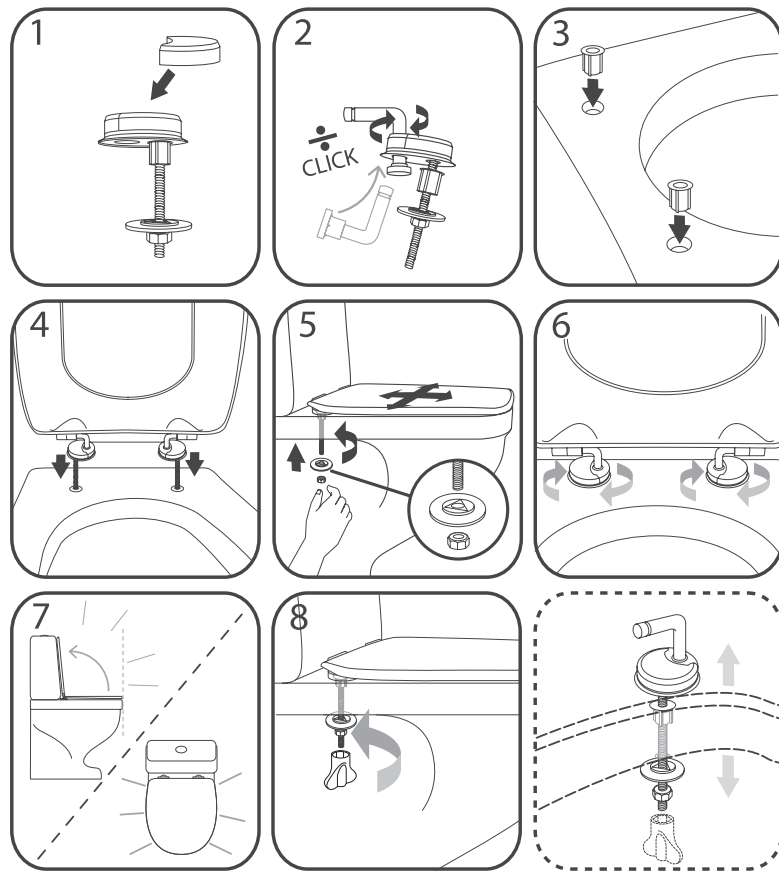
Cleaning Instructions

Use a mild soap solution. Seat and hinge should not be left damp, but be dried with a soft cloth. When using abrasive, corrosive or chlorine based cleaners for the bowl, avoid contact with seat and hinge as it may lead to damages or flash rust. Therefore, when cleaning the bowl, make sure that seat and cover are in an upright position until all the cleaner has been flushed away



Villeroy & Boch
 1748

8821 01 61



04/06

Material Description

TOILET SEAT: The material is colour ingrained duroplast (UF A 10 = urea formaldehyde) that contains no environmentally hazardous substances. UF plastic comprises 67% urea formaldehyde resin, 28% cellulose, as well as 5% minerals, pigments, lubricants and moisture content. The raw material from the supplier contains less than 0,03% formaldehyde after a special curing process.

BUFFERS: EVA (copolymer made of ethylene and vinyl acetate).

MOUNT/HINGE: Stainless steel.

Guarantee

The guarantee includes faults or defects in the material of our products within a periode of 10 years. Products subject to minor technical modifications and design deviations E. & O.E.